

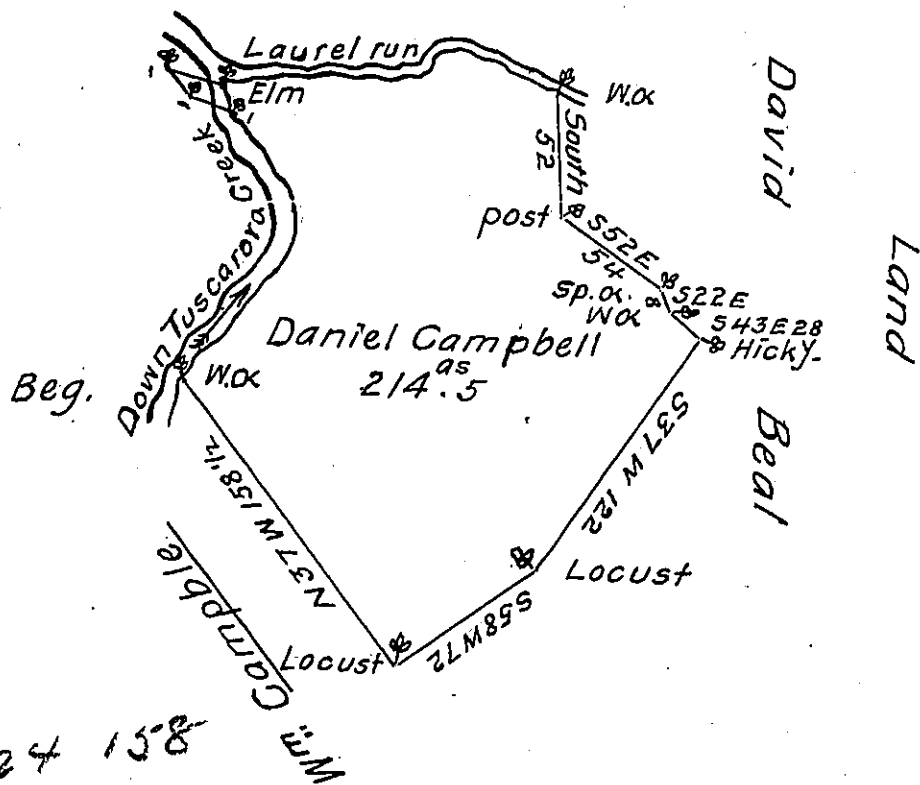
Courses & Dist^{cs}
down Tuscarora Creek. }

N 37 E 14
N 47 E 23
N 25 E 13
N 38 E 28
N 18 E 11
N 32 W 50
Cross the Creek

N 63 W 20
N 44 W 18
S 67 E 28 to the
mouth of Laurel run.
Courses up Laurel run

N 67 E 19
East 70
N 40 E. 14.
S 87 E. 14
S 60 E. 40 to a W α

C 24 158



A Draught of a tract of land Situate in Lack township Cumberland County containing two hundred fourteen acres five tenths & the usual allowance of Six $\frac{1}{2}$ Cent for roads &c Surveyed for Daniel Campbell July the 9th 1788 in pursuance of an Application N^o 5112 Dated July the 19th 1768.

John Lukens Esq. }
Surv^r. Genl. - }

J^r. Jn^o. Stuart

IN TESTIMONY that the above is a copy of the original remaining on file in the Department of Internal Affairs of Pennsylvania, made conformably to an Act of Assembly approved the 16th day of February, 1833, I have hereunto set my Hand and caused the Seal of said Department to be affixed at Harrisburg, this twentieth day of September 1904.

Loae P. Pearson
Secretary of Internal Affairs.